

Anti-TUBB3 antibody [AA10] (STJA0003815)

GENERAL INFORMATION

Product Type	Primary antibodies
Applications	WB/IHC/ICC
Host / Source	Mouse
Reactivity	Mouse/Rat/Bovine/Canine/Feline/Goat/Guinea Pig/Hamster/Horse/Human/Non-Human Primates/Rabbit/Sheep/Vole

PRODUCT PROPERTIES

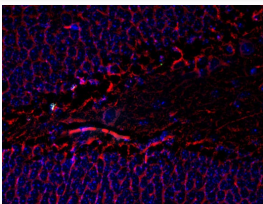
Clonality	Monoclonal
Conjugation	Unconjugated
Purification	This antibody was protein g purified culture from supernatant.
Dilution Range	WB 1:10000 IHC 1:1000
Formulation	100 μ l in 10 mM HEPES (pH 7.5) , 150 mM NaCl, 100 μ g per ml BSA and 50% Glycerol.
Isotype	IgG
Storage Instruction	Store at -20°C for up to 1 year from the date of receipt, and avoid repeat freeze-thaw cycles.

TARGET INFORMATION

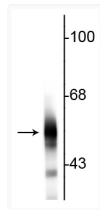
Gene ID	246118
Gene Symbol	Tubb3
UniProt ID	TBB3_RAT

ADDITIONAL INFORMATION

Note STRICTLY FOR FURTHER SCIENTIFIC RESEARCH USE ONLY (RUO). MUST NOT TO BE USED IN DIAGNOSTIC OR THERAPEUTIC APPLICATIONS.



IHC staining with beta III tubulin in mouse dentate gyrus STJA0003815



Western blot 55 kDa beta III tubulin protein band in rat cortical lysate STJA0003815