

Anti-SYN1 antibody (STJA0003780)

GENERAL INFORMATION

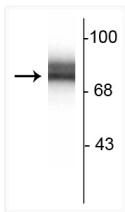
Product Type	Primary antibodies
Applications	WB/ICC/IP
Host / Source	Rabbit
Reactivity	Human/Mouse/Rat

PRODUCT PROPERTIES

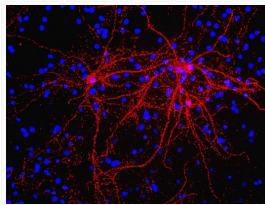
Clonality	Polyclonal
Conjugation	Unconjugated
Purification	This antibody was antigen affinity purified from pooled serum.
Dilution Range	WB 1:1000 ICC 1:1000-1:20001 μ l per 200 μ g lysate
Formulation	100 μ l in 10 mM HEPES (pH 7.5) , 150 mM NaCl, 100 μ g per ml BSA and 50% Glycerol.
Isotype	IgG
Storage Instruction	Store at -20°C for up to 1 year from the date of receipt, and avoid repeat freeze-thaw cycles.

ADDITIONAL INFORMATION

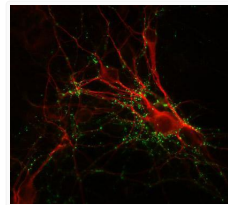
Note STRICTLY FOR FURTHER SCIENTIFIC RESEARCH USE ONLY (RUO). MUST NOT TO BE USED IN DIAGNOSTIC OR THERAPEUTIC APPLICATIONS.



Western blot 78 kDa synapsin I doublet protein in rat hippocampal lysate STJA0003780



ICC staining rat cortical neurons with synapsin I antibody punctate red labeling STJA0003780



IHC staining with antibody synapsin distribution in mouse caudate neurons STJA0003780