

Anti-RBPMS antibody (N-Term) (STJA0003764)

GENERAL INFORMATION

Product Type	Primary antibodies
Applications	WB/IHC/ICC
Host / Source	Rabbit
Reactivity	Feline/Guinea Pig/Pig/Human/Mouse/Non-Human Primates/Rabbit/Rat/Tree Shrew/Whale/Zebrafish/Canine/Hamster

PRODUCT PROPERTIES

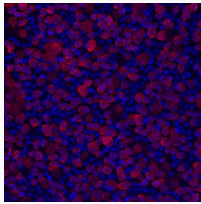
Clonality	Polyclonal
Conjugation	Unconjugated
Purification	This antibody was antigen affinity purified from serum.
Dilution Range	WB 1:1000 IHC 1:100-1:2000 ICC 1:200-1:500
Formulation	100 ul in PBS + 0.03% Sodium Azide
Isotype	IgG
Storage Instruction	Store at -20°C for up to 1 year from the date of receipt, and avoid repeat freeze-thaw cycles.

TARGET INFORMATION

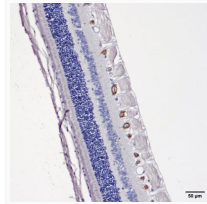
Gene ID	19663
Gene Symbol	Rbpms
UniProt ID	RBPMS_MOUSE
Immunogen Region	N-Term

ADDITIONAL INFORMATION

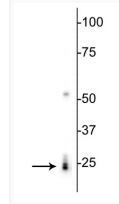
Note STRICTLY FOR FURTHER SCIENTIFIC RESEARCH USE ONLY (RUO). MUST NOT TO BE USED IN DIAGNOSTIC OR THERAPEUTIC APPLICATIONS.



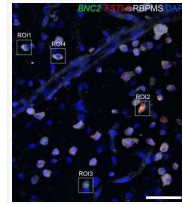
IHC staining RBPMS in mouse retinal ganglion cells shown in red STJA0003764



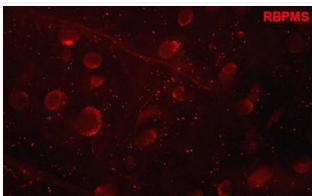
IHC staining demonstrating specific RBPMS immunolabeling in tissue section STJA0003764



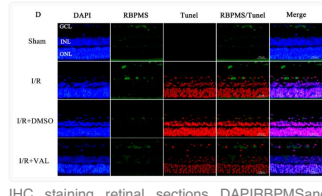
Western blot 24 kDa RBPMS protein detection in rat heart lysate STJA0003764



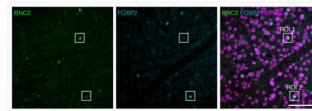
IHC confocal image macaque ganglion cell layer stained with RBPMS antibody STJA0003764



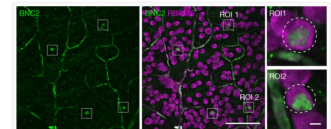
antibody IHC staining RBPMS-labeled RGCs in whole mount whale retina STJA0003764



IHC staining retinal sections DAPI/RBPMS and TUNEL fluorescence markers STJA0003764



IHC confocal image RBPMS antibody staining in macaque GCL tissue STJA0003764



IHC staining human ganglion cell layer BNC2 and RBPMS labeling using antibody STJA0003764