

## Anti-Phospho-RPH3A-Ser234 antibody (STJA0003761)

### GENERAL INFORMATION

Product Type	Primary antibodies
Applications	WB/ICC
Host / Source	Rabbit
Reactivity	Rat/Mouse

### PRODUCT PROPERTIES

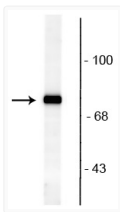
Clonality	Polyclonal
Conjugation	Unconjugated
Purification	This antibody was antigen affinity purified from pooled serum.
Dilution Range	WB 1:1000 ICC 1:400
Formulation	100 $\mu$ l in 10 mM HEPES (pH 7.5) , 150 mM NaCl, 100 $\mu$ g per ml BSA and 50% Glycerol.
Isotype	IgG
Storage Instruction	Store at -20°C for up to 1 year from the date of receipt, and avoid repeat freeze-thaw cycles.

### TARGET INFORMATION

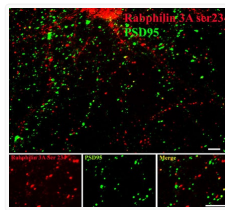
Gene ID	<a href="#">171039</a>
Gene Symbol	<a href="#">Rph3a</a>
UniProt ID	<a href="#">RP3A_RAT</a>

### ADDITIONAL INFORMATION

Note STRICTLY FOR FURTHER SCIENTIFIC RESEARCH USE ONLY (RUO). MUST NOT TO BE USED IN DIAGNOSTIC OR THERAPEUTIC APPLICATIONS.



Western blot rabphilin 3A phosphorylated at Ser234 in rat brain lysate STJA0003761



ICC staining rat cortical neurons phospho-rabphilin Ser234 red and PSD95 green STJA0003761