

Anti-Phospho-Polo-Like Kinase Kinase-Ser482/486/490 antibody (STJA0003750)

GENERAL INFORMATION

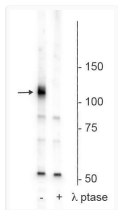
Product Type	Primary antibodies
Applications	WB
Host / Source	Rabbit
Reactivity	Rat/Xenopus/Human/Mouse/Zebrafish

PRODUCT PROPERTIES

Clonality	Polyclonal
Conjugation	Unconjugated
Purification	This antibody was antigen affinity purified from pooled serum.
Dilution Range	WB 1:1000
Formulation	100 μ l in 10 mM HEPES (pH 7.5) , 150 mM NaCl, 100 μ g per ml BSA and 50% Glycerol.
Isotype	IgG
Storage Instruction	Store at -20°C for up to 1 year from the date of receipt, and avoid repeat freeze-thaw cycles.

ADDITIONAL INFORMATION

Note STRICTLY FOR FURTHER SCIENTIFIC RESEARCH USE ONLY (RUO). MUST NOT TO BE USED IN DIAGNOSTIC OR THERAPEUTIC APPLICATIONS.



Western blot phospho-Polo-Like Kinase Kinase detection in rat hippocampal lysate STJA0003750