

Anti-PRPH antibody (STJA0003748)

GENERAL INFORMATION

Product Type	Primary antibodies
Applications	WB/IHC/ICC
Host / Source	Chicken
Reactivity	Bovine/Human/Mouse/Rat/Canine/Feline/Goat/Guinea Pig/Hamster/Horse/Non-Human Primates/Rabbit/Sheep

PRODUCT PROPERTIES

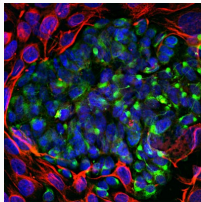
Clonality	Polyclonal
Conjugation	Unconjugated
Purification	This antibody was total igr fraction.
Dilution Range	WB 1:1000 IHC 1:500-1:2000 ICC 1:500-1:5000
Formulation	Total IgY fraction in PBS + 10 mM Sodium Azide.
Isotype	IgY
Storage Instruction	Store at -20°C for up to 1 year from the date of receipt, and avoid repeat freeze-thaw cycles.

TARGET INFORMATION

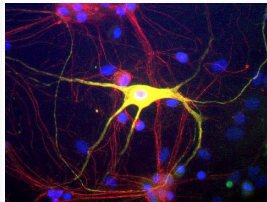
Gene Symbol	Prph Uniprot ID= PERL_RAT "
-------------	---

ADDITIONAL INFORMATION

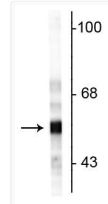
Note STRICTLY FOR FURTHER SCIENTIFIC RESEARCH USE ONLY (RUO). MUST NOT TO BE USED IN DIAGNOSTIC OR THERAPEUTIC APPLICATIONS.



ICC staining PC12 cells and fibroblasts with anti-peripherin green and anti-vimentin red STJA0003748



IHC staining with peripherin green and alpha-internexin red in rat neurons STJA0003748



Western blot immunolabeling in rat cerebellar lysate STJA0003748