

Anti-PRPH antibody [7C5] (STJA0003747)

GENERAL INFORMATION

Product Type	Primary antibodies
Applications	WB/IHC/ICC
Host / Source	Mouse
Reactivity	Mouse/Rat

PRODUCT PROPERTIES

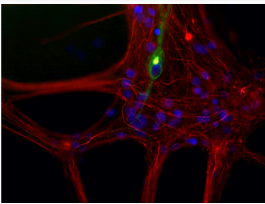
Clonality	Monoclonal
Conjugation	Unconjugated
Purification	This antibody was concentrated tissue culture from supernatant.
Dilution Range	WB 1:1000 IHC 1:200 ICC 1:200-1:500
Formulation	100 ul in PBS + 10 mM Sodium Azide.
Isotype	IgG1
Storage Instruction	Store at -20°C for up to 1 year from the date of receipt, and avoid repeat freeze-thaw cycles.

TARGET INFORMATION

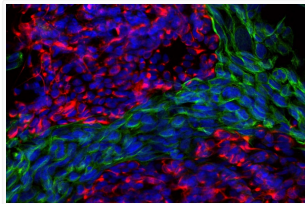
Gene Symbol	Prph
UniProt ID	PERI_RAT

ADDITIONAL INFORMATION

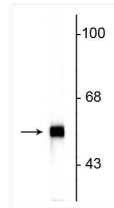
Note STRICTLY FOR FURTHER SCIENTIFIC RESEARCH USE ONLY (RUO). MUST NOT TO BE USED IN DIAGNOSTIC OR THERAPEUTIC APPLICATIONS.



Immunostaining of cultured newborn rat neurons and glia showing peripherin (STJA0003747, green, 1:200) and neurofilament L (red). The nuclear DNA is stained blue.



Immunofluorescence of mixed fibroblasts and PC12 cells labeled with anti-peripherin (STJA0003747, red, 1:500) and anti-vimentin (STJA0003823, green, 1:10,000). The blue is Hoechst staining nuclear DNA. Peripherin is labeled in only the PC12 cells cytoplasmic filaments and vimentin is only labeled in the fibroblasts intermediate filaments where peripherin is not present.



Western blot of rat cerebellar lysate showing specific immunolabeling of the ~57 kDa peripherin protein.