

## Anti-Phospho-GRIN2C-Ser1096 antibody (STJA0003725)

### GENERAL INFORMATION

Product Type	Primary antibodies
Applications	WB
Host / Source	Rabbit
Reactivity	Mouse/Rat/Bovine/Canine/Human/Non-Human Primates

### PRODUCT PROPERTIES

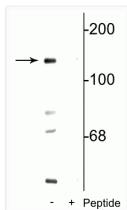
Clonality	Polyclonal
Conjugation	Unconjugated
Purification	This antibody was antigen affinity purified from pooled serum.
Dilution Range	WB 1:1000
Formulation	100 $\mu$ l in 10 mM HEPES (pH 7.5) , 150 mM NaCl, 100 $\mu$ g per ml BSA and 50% Glycerol.
Isotype	IgG
Storage Instruction	Store at -20°C for up to 1 year from the date of receipt, and avoid repeat freeze-thaw cycles.

### TARGET INFORMATION

Gene ID	<a href="#">24411</a>
Gene Symbol	<a href="#">Grin2c</a>
UniProt ID	<a href="#">NMDE3_RAT</a>

### ADDITIONAL INFORMATION

Note **STRICTLY FOR FURTHER SCIENTIFIC RESEARCH USE ONLY (RUO). MUST NOT TO BE USED IN DIAGNOSTIC OR THERAPEUTIC APPLICATIONS.**



Western blot NR2C NMDA receptor subunit phosphorylation at Ser1096 in mouse brain lysate  
 STJA0003725