

Anti-GRIN2B antibody (C-Term) (STJA0003715)

GENERAL INFORMATION

Product Type	Primary antibodies
Applications	WB/IHC/IP
Host / Source	Rabbit
Reactivity	Human/Mouse/Rat

PRODUCT PROPERTIES

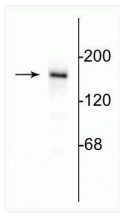
Clonality	Polyclonal
Conjugation	Unconjugated
Purification	This antibody was antigen affinity purified from pooled serum.
Dilution Range	WB 1:1000 IHC 1:1000 IP 3 μ l per 200 μ g lysate
Formulation	100 μ l in 10 mM HEPES (pH 7.5) , 150 mM NaCl, 100 μ g per ml BSA and 50% Glycerol.
Isotype	IgG
Storage Instruction	Store at -20°C for up to 1 year from the date of receipt, and avoid repeat freeze-thaw cycles.

TARGET INFORMATION

Gene ID	24410
Gene Symbol	Grin2b
UniProt ID	NMDE2_RAT
Immunogen Region	C-Term

ADDITIONAL INFORMATION

Note STRICTLY FOR FURTHER SCIENTIFIC RESEARCH USE ONLY (RUO). MUST NOT TO BE USED IN DIAGNOSTIC OR THERAPEUTIC APPLICATIONS.



Western blot NR2B subunit 180 kDa
 immunolabeling in rat hippocampal lysate
 STJA0003715