

Anti-GRIN2A antibody (C-Term) (STJA0003710)

GENERAL INFORMATION

Product Type	Primary antibodies
Applications	WB/IHC/IP
Host / Source	Rabbit
Reactivity	Human/Mouse/Rabbit/Rat

PRODUCT PROPERTIES

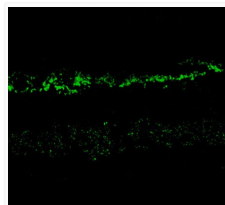
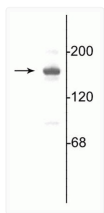
Clonality	Polyclonal
Conjugation	Unconjugated
Purification	This antibody was antigen affinity purified from pooled serum.
Dilution Range	WB 1:1000 IHC 1:1000 IP 3 µl per 200 µg lysate
Formulation	100 µl in 10 mM HEPES (pH 7.5) , 150 mM NaCl, 100 µg per ml BSA and 50% Glycerol.
Isotype	IgG
Storage Instruction	Store at -20°C for up to 1 year from the date of receipt, and avoid repeat freeze-thaw cycles.

TARGET INFORMATION

Gene ID	24409
Gene Symbol	Grin2a
UniProt ID	NMDE1_RAT
Immunogen Region	C-Term

ADDITIONAL INFORMATION

Note STRICTLY FOR FURTHER SCIENTIFIC RESEARCH USE ONLY (RUO). MUST NOT TO BE USED IN DIAGNOSTIC OR THERAPEUTIC APPLICATIONS.



Western blot immunolabeling STJA0003710 NR2A subunit in rat hippocampal lysate 180 kDa IHC staining rabbit retina NR2A in photoreceptors and inner plexiform layer STJA0003710