

## Anti-GRIN1 antibody (1-564) [R1JHL] (STJA0003705)

### GENERAL INFORMATION

Product Type	Primary antibodies
Applications	WB/IHC/ICC
Host / Source	Mouse
Reactivity	Human/Mouse/Rat

### PRODUCT PROPERTIES

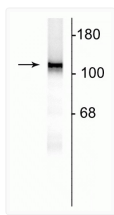
Clonality	Monoclonal
Conjugation	Unconjugated
Purification	This antibody was culture from supernatant.
Dilution Range	WB 1:1000 IHC 1:400-1:1000 ICC 1:10 IP 3 $\mu$ g per 200 $\mu$ g lysate
Formulation	Lyophilized
Isotype	IgG
Storage Instruction	Store at -20°C for up to 1 year from the date of receipt, and avoid repeat freeze-thaw cycles.

### TARGET INFORMATION

Gene ID	<a href="#">24408</a>
Gene Symbol	<a href="#">Grin1</a>
UniProt ID	<a href="#">NMDZ1_RAT</a>
Immunogen Region	1-564

### ADDITIONAL INFORMATION

Note STRICTLY FOR FURTHER SCIENTIFIC RESEARCH USE ONLY (RUO). MUST NOT TO BE USED IN DIAGNOSTIC OR THERAPEUTIC APPLICATIONS.



Western blot of 10  $\mu$ g of rat hippocampal lysate showing specific immunolabeling of the ~120 kDa NR1 subunit of the NMDA receptor.