

Anti-NEFH antibody (STJA0003698)

GENERAL INFORMATION

Product Type	Primary antibodies
Applications	WB/IHC/ICC
Host / Source	Chicken
Reactivity	All Mammalian/Chicken

PRODUCT PROPERTIES

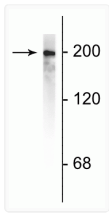
Clonality	Polyclonal
Conjugation	Unconjugated
Purification	This antibody was total igy fraction.
Dilution Range	WB 1:50000 IHC 1:5000-1:25,000 ICC 1:25,000
Formulation	Total IgY fraction in PBS + 10 mM Sodium Azide.
Isotype	IgY
Storage Instruction	Store at -20°C for up to 1 year from the date of receipt, and avoid repeat freeze-thaw cycles.

TARGET INFORMATION

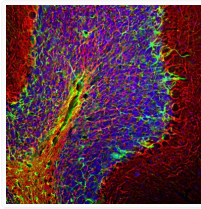
Gene ID	4744
Gene Symbol	NEFH
UniProt ID	NFH_HUMAN

ADDITIONAL INFORMATION

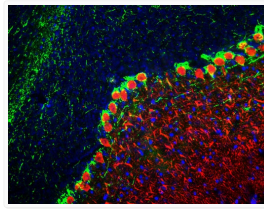
Note STRICTLY FOR FURTHER SCIENTIFIC RESEARCH USE ONLY (RUO). MUST NOT TO BE USED IN DIAGNOSTIC OR THERAPEUTIC APPLICATIONS.



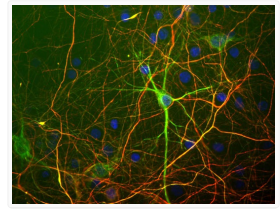
Western blot immunolabeling in rat cortical lysate. 200 kDa NF-H protein. STJA0003698



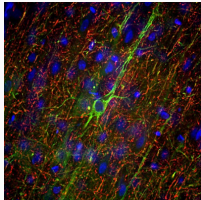
IHC staining rat cerebellum section with anti-Neurofilament H antibody neuronal labeling. STJA0003698



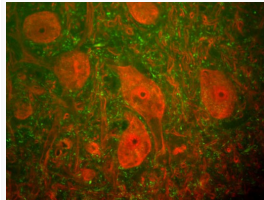
IHC staining rat cerebellum section using anti-Neurofilament H antibody axon labeling. STJA0003698



ICC staining rat neurons and glia using anti-NFH antibody red and anti-NFL green. STJA0003698



anti-Neurofilament-H IHC staining in rat frontal cortex neuronal axon network. STJA0003698



IHC staining rat spinal cord with anti-Neurofilament H alpha-motorneurons in green. STJA0003698