

Anti-Phospho-MECP2-Ser421 antibody (STJA0003681)

GENERAL INFORMATION

Product Type	Primary antibodies
Applications	WB
Host / Source	Rabbit
Reactivity	Mouse/Rat/Human/Non-Human Primates

PRODUCT PROPERTIES

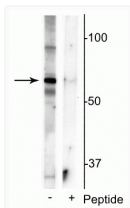
Clonality	Polyclonal
Conjugation	Unconjugated
Purification	This antibody was antigen affinity purified from pooled serum.
Dilution Range	WB 1:1000
Formulation	100 μ l in 10 mM HEPES (pH 7.5) , 150 mM NaCl, 100 μ g per ml BSA and 50% Glycerol.
Isotype	IgG
Storage Instruction	Store at -20°C for up to 1 year from the date of receipt, and avoid repeat freeze-thaw cycles.

TARGET INFORMATION

Gene ID	17257
Gene Symbol	Mecp2
UniProt ID	MECP2_MOUSE

ADDITIONAL INFORMATION

Note STRICTLY FOR FURTHER SCIENTIFIC RESEARCH USE ONLY (RUO). MUST NOT TO BE USED IN DIAGNOSTIC OR THERAPEUTIC APPLICATIONS.



Western blot immunolabeling in phospho-MECP2 Ser421 mouse brain lysate
 STJA0003681