

Anti-MECP2 antibody (Full-Length) [5H12] (STJA0003679)

GENERAL INFORMATION

Product Type	Primary antibodies
Applications	WB/IHC/ICC
Host / Source	Mouse
Reactivity	Human/Mouse/Rat

PRODUCT PROPERTIES

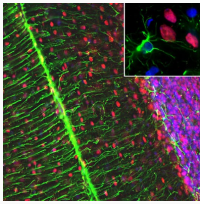
Clonality	Monoclonal
Conjugation	Unconjugated
Purification	This antibody was protein g purified culture from supernatant.
Dilution Range	WB 1:2000 IHC 1:500-1:5000 ICC 1:1000-1:5000
Formulation	100 ul in PBS + 50% Glycerol and 5 mM Sodium Azide
Isotype	IgG2b
Storage Instruction	Store at -20°C for up to 1 year from the date of receipt, and avoid repeat freeze-thaw cycles.

TARGET INFORMATION

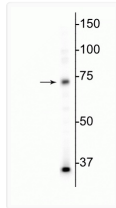
Gene ID	4204
Gene Symbol	MECP2
UniProt ID	MECP2_HUMAN
Immunogen Region	Full-Length

ADDITIONAL INFORMATION

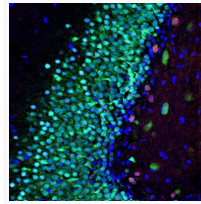
Note STRICTLY FOR FURTHER SCIENTIFIC RESEARCH USE ONLY (RUO). MUST NOT TO BE USED IN DIAGNOSTIC OR THERAPEUTIC APPLICATIONS.



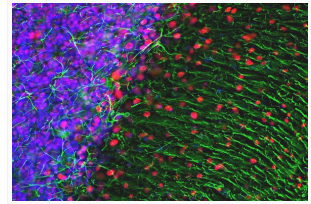
MeCP2 antibody IHC staining in rat cerebellum section neuronal nuclei in red STJA0003679



Western blot MeCP2 protein immunolabeling at 75 kDa in mouse brain lysate STJA0003679



IHC staining rat hippocampus with MeCP2 antibody nuclear labeling in red STJA0003679



anti-MeCP2 IF staining rat cerebellum section with GFAP colocalization and DAPI STJA0003679