

Anti-MAP2 antibody (Full-Length) [2C4] (STJA0003677)

GENERAL INFORMATION

Product Type	Primary antibodies
Applications	WB/IHC/ICC
Host / Source	Mouse
Reactivity	Bovine/Human/Mouse/Rat

PRODUCT PROPERTIES

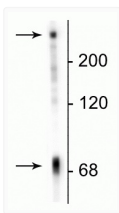
Clonality	Monoclonal
Conjugation	Unconjugated
Purification	This antibody was protein g purified culture from supernatant.
Dilution Range	WB 1:5000 IHC 1:2500-1:10,000 ICC 1:2500-1:10,000
Formulation	100 ul in PBS + 50% Glycerol and 5 mM Sodium Azide
Isotype	IgG2a
Storage Instruction	Store at -20°C for up to 1 year from the date of receipt, and avoid repeat freeze-thaw cycles.

TARGET INFORMATION

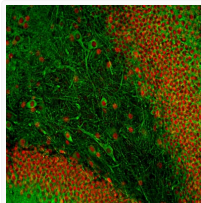
Gene ID	4133
Gene Symbol	MAP2
UniProt ID	MTAP2_HUMAN
Immunogen Region	Full-Length

ADDITIONAL INFORMATION

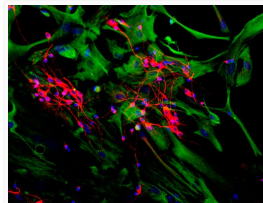
Note STRICTLY FOR FURTHER SCIENTIFIC RESEARCH USE ONLY (RUO). MUST NOT TO BE USED IN DIAGNOSTIC OR THERAPEUTIC APPLICATIONS.



Western blot MAP2C-D 70 kDa and MAP2A-B 280 kDa proteins in rat brain lysate STJA0003677



IHC staining adult rat hippocampus section using Anti-MAP2C antibody green with FOX2 co-stain STJA0003677



ICC staining with anti-MAP2C-D antibody neuronal dendrites and perikarya in red with DAPI nuclei STJA0003677