

Anti-Phospho-GRIA1-Ser831 antibody (STJA0003661)

GENERAL INFORMATION

Product Type	Primary antibodies
Applications	WB
Host / Source	Rabbit
Reactivity	Human/Mouse/Rat/Canine/Chicken

PRODUCT PROPERTIES

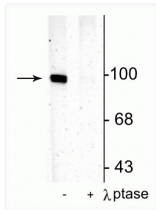
Clonality	Polyclonal
Conjugation	Unconjugated
Purification	This antibody was antigen affinity purified from pooled serum.
Dilution Range	WB 1:1000
Formulation	100 μ l in 10 mM HEPES (pH 7.5) , 150 mM NaCl, 100 μ g per ml BSA and 50% Glycerol.
Isotype	IgG
Storage Instruction	Store at -20°C for up to 1 year from the date of receipt, and avoid repeat freeze-thaw cycles.

TARGET INFORMATION

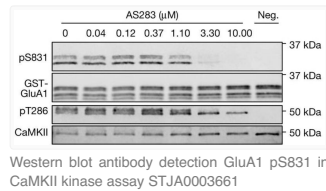
Gene ID	50592
Gene Symbol	Gria1
UniProt ID	GRIA1_RAT

ADDITIONAL INFORMATION

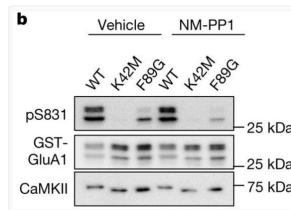
Note STRICTLY FOR FURTHER SCIENTIFIC RESEARCH USE ONLY (RUO). MUST NOT TO BE USED IN DIAGNOSTIC OR THERAPEUTIC APPLICATIONS.



Western blot GluR1 phosphorylation at Ser831 in rat hippocampal lysate STJA0003661



Western blot antibody detection GluA1 pS831 in CaMKII kinase assay STJA0003661



Western blot antibody detection GluR1 S831 phosphorylation in CaMKII kinase assay STJA0003661