

## Anti-Phospho-EPHB2-Tyr298 antibody (STJA0003627)

### GENERAL INFORMATION

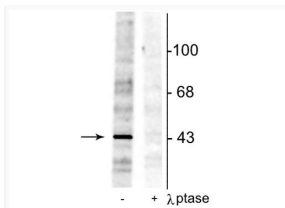
Product Type	Primary antibodies
Applications	WB
Host / Source	Rabbit
Reactivity	Human/Rat/Bovine/Canine/Chicken/Non-Human Primates/Mouse/Xenopus/Zebrafish

### PRODUCT PROPERTIES

Clonality	Polyclonal
Conjugation	Unconjugated
Purification	This antibody was antigen affinity purified from pooled serum.
Dilution Range	WB 1:1000
Formulation	100 $\mu$ l in 10 mM HEPES (pH 7.5) , 150 mM NaCl, 100 $\mu$ g per ml BSA and 50% Glycerol.
Isotype	IgG
Storage Instruction	Store at -20°C for up to 1 year from the date of receipt, and avoid repeat freeze-thaw cycles.

### ADDITIONAL INFORMATION

Note STRICTLY FOR FURTHER SCIENTIFIC RESEARCH USE ONLY (RUO). MUST NOT TO BE USED IN DIAGNOSTIC OR THERAPEUTIC APPLICATIONS.



Western blot EphrinB Tyr298 phosphorylation in rat testes with phosphatase control STJA0003627