

## Anti-Dopamine Beta-Hydroxylase antibody (N-Term) (STJA0003615)

### GENERAL INFORMATION

|               |                          |
|---------------|--------------------------|
| Product Type  | Primary antibodies       |
| Applications  | WB                       |
| Host / Source | Sheep                    |
| Reactivity    | Human/Non-Human Primates |

### PRODUCT PROPERTIES

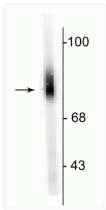
|                     |  |
|---------------------|--|
| Clonality           | Polyclonal   |
| Conjugation         | Unconjugated   |
| Purification        | This antibody was antigen affinity purified from pooled serum.                                 |
| Dilution Range      | WB 1:1000  |
| Formulation         | 100 $\mu$ l in 10 mM HEPES (pH 7.5) , 150 mM NaCl, 100 $\mu$ g per ml BSA and 50% Glycerol.    |
| Isotype             | IgG  |
| Storage Instruction | Store at -20°C for up to 1 year from the date of receipt, and avoid repeat freeze-thaw cycles. |

### TARGET INFORMATION

|                  |                            |
|------------------|----------------------------|
| Gene ID          | <a href="#">1621</a>       |
| Gene Symbol      | <a href="#">DBH</a>        |
| UniProt ID       | <a href="#">DOPO_HUMAN</a> |
| Immunogen Region | N-Term                     |

### ADDITIONAL INFORMATION

Note STRICTLY FOR FURTHER SCIENTIFIC RESEARCH USE ONLY (RUO). MUST NOT TO BE USED IN DIAGNOSTIC OR THERAPEUTIC APPLICATIONS.



Western blot 75 kDa DBH protein immunolabeling in human adrenal medulla lysate STJA0003615