

## Anti-Phospho-Connexin 43-Ser368 antibody (STJA0003603)

### GENERAL INFORMATION

Product Type	Primary antibodies
Applications	WB
Host / Source	Rabbit
Reactivity	Mouse/Rat/Bovine/Canine/Chicken/Guinea Pig/Human/Zebrafish

### PRODUCT PROPERTIES

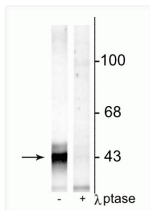
Clonality	Polyclonal
Conjugation	Unconjugated
Purification	This antibody was antigen affinity purified from pooled serum.
Dilution Range	WB 1:1000
Formulation	100 $\mu$ l in 10 mM HEPES (pH 7.5) , 150 mM NaCl, 100 $\mu$ g per ml BSA and 50% Glycerol.
Isotype	IgG
Storage Instruction	Store at -20°C for up to 1 year from the date of receipt, and avoid repeat freeze-thaw cycles.

### TARGET INFORMATION

Gene ID	<a href="#">24392</a>
Gene Symbol	<a href="#">Gja1</a>
UniProt ID	<a href="#">CXA1_RAT</a>

### ADDITIONAL INFORMATION

Note STRICTLY FOR FURTHER SCIENTIFIC RESEARCH USE ONLY (RUO). MUST NOT TO BE USED IN DIAGNOSTIC OR THERAPEUTIC APPLICATIONS.



Western blot connexin43 Ser368 phosphorylation in rat hippocampal lysate STJA0003603