

## Anti-Collagen 1, alpha 1 telopeptide antibody (STJA0003600)

### GENERAL INFORMATION

Product Type	Primary antibodies
Applications	WB/IHC
Host / Source	Rabbit
Reactivity	Human/Mouse/Rat/Sheep/Bovine/Canine/Chicken/Feline/Finch/Goat/Guinea Pig/Hamster/Horse/Non-Human Primates/Rabbit/Vole/Xenopus

### PRODUCT PROPERTIES

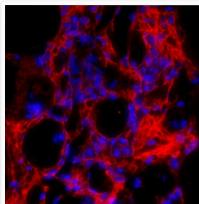
Clonality	Polyclonal
Conjugation	Unconjugated
Purification	This antibody was antigen affinity purified from serum.
Dilution Range	WB 1:1000 IHC 1:100-1:200
Formulation	100 ul in PBS
Isotype	IgG
Storage Instruction	Store at -20°C for up to 1 year from the date of receipt, and avoid repeat freeze-thaw cycles.

### TARGET INFORMATION

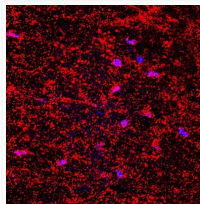
Gene ID	<a href="#">1277</a>
Gene Symbol	<a href="#">COL1A1</a>
UniProt ID	<a href="#">CO1A1_HUMAN</a>

### ADDITIONAL INFORMATION

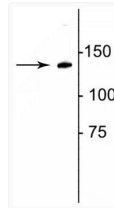
Note STRICTLY FOR FURTHER SCIENTIFIC RESEARCH USE ONLY (RUO). MUST NOT TO BE USED IN DIAGNOSTIC OR THERAPEUTIC APPLICATIONS.



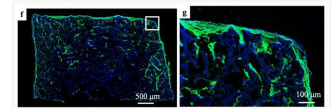
IHC staining fibrotic mouse lung tissue using antibody collagen I in red STJA0003600



IHC staining mouse spinal cord section collagen fibers using antibody with DAPI counterstain STJA0003600



Western blot 140 kDa collagen protein immunolabeling in rat lung lysate STJA0003600



ICC staining COL1A1 using antibody in hiPSC-seeded sponge section with DAPI nuclear stain STJA0003600