

Anti-CALB2 antibody (STJA0003588)

GENERAL INFORMATION

Product Type	Primary antibodies
Applications	WB/IHC
Host / Source	Sheep
Reactivity	Rat/Human/Mouse/Non-Human Primates

PRODUCT PROPERTIES

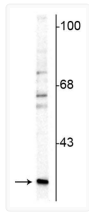
Clonality	Polyclonal
Conjugation	Unconjugated
Purification	This antibody was protein g purified from serum.
Dilution Range	WB 1:1000 IHC 1:500
Formulation	100 μ l in 10 mM Tris, 100 mM NaCl
Isotype	IgG
Storage Instruction	Store at -20°C for up to 1 year from the date of receipt, and avoid repeat freeze-thaw cycles.

TARGET INFORMATION

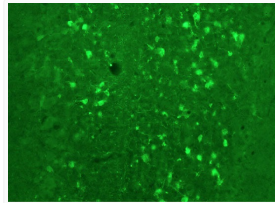
Gene ID	117059
Gene Symbol	Calb2
UniProt ID	CALB2_RAT

ADDITIONAL INFORMATION

Note STRICTLY FOR FURTHER SCIENTIFIC RESEARCH USE ONLY (RUO). MUST NOT TO BE USED IN DIAGNOSTIC OR THERAPEUTIC APPLICATIONS.



Western blot immunolabeling in rat cerebellar lysate with calretinin antibody STJA0003588. Molecular weight markers are shown at 100, 68, and 43 kDa. An arrow points to the calretinin band at approximately 29 kDa.



IHC staining of rat cerebellum with calretinin antibody green fluorescent cells STJA0003588.