

Anti-CD39/ENTPD1 antibody [A1] {FITC} (STJA0000954)

GENERAL INFORMATION

Product Type	Primary antibodies
Applications	FC
Host / Source	Mouse
Reactivity	Human

PRODUCT PROPERTIES

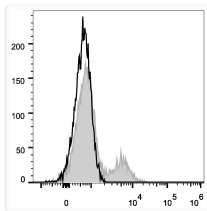
Clonality	Monoclonal
Concentration	5 Mu L/Test
Conjugation	FITC
Formulation	Phosphate buffered solution, pH 7.2, containing 0.09% stabilizer and 1% protein protectant.
Isotype	IgG1k
Storage Instruction	Store between 2-8°C and protecting from prolonged exposure to light. Do not freeze this product.

TARGET INFORMATION

Gene ID	953
Gene Symbol	ENTPD1
UniProt ID	ENTP1_HUMAN

ADDITIONAL INFORMATION

Note **FOR SCIENTIFIC EDUCATIONAL RESEARCH USE ONLY (RUO). MUST NOT BE USED IN DIAGNOSTIC OR OTHER MEDICAL APPLICATIONS.**



Human peripheral blood lymphocytes were stained with Anti-CD39 antibody (STJA0000954) (filled gray histogram). Unstained lymphocytes (empty black histogram) were used as control.