

## Anti-CD161/KLRB1 antibody [HP-3G10] {PE/Cyanine7} (STJA0000942)

### GENERAL INFORMATION

Product Type	Primary antibodies
Applications	FC
Host / Source	Mouse
Reactivity	Human

### PRODUCT PROPERTIES

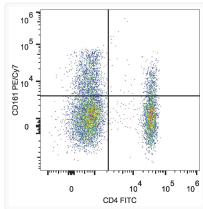
Clonality	Monoclonal
Concentration	5 Mu L/Test
Conjugation	PE/Cyanine7
Formulation	Phosphate buffered solution, pH 7.2, containing 0.09% stabilizer and 1% protein protectant.
Isotype	IgG1k
Storage Instruction	Store between 2-8°C and protecting from prolonged exposure to light. Do not freeze this product.

### TARGET INFORMATION

Gene ID	<a href="#">3820</a>
Gene Symbol	<a href="#">KLRB1</a>
UniProt ID	<a href="#">KLRB1_HUMAN</a>

### ADDITIONAL INFORMATION

Note **FOR SCIENTIFIC EDUCATIONAL RESEARCH USE ONLY (RUO). MUST NOT BE USED IN DIAGNOSTIC OR OTHER MEDICAL APPLICATIONS.**



Human peripheral blood lymphocytes were stained with Anti-Human CD4 Monoclonal Antibody (FITC Conjugated) and Anti-CD161 antibody (STJA0000942)