

Anti-CD138/SDC1 antibody [DL-101] {APC} (STJA0000939)

GENERAL INFORMATION

Product Type	Primary antibodies
Applications	FC
Host / Source	Mouse
Reactivity	Human

PRODUCT PROPERTIES

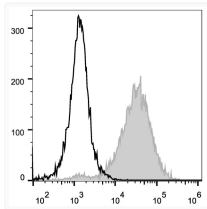
Clonality	Monoclonal
Concentration	5 Mu L/Test
Conjugation	APC
Formulation	Phosphate buffered solution, pH 7.2, containing 0.09% stabilizer and 1% protein protectant.
Isotype	IgG1k
Storage Instruction	Store between 2-8°C and protecting from prolonged exposure to light. Do not freeze this product.

TARGET INFORMATION

Gene ID	6382
Gene Symbol	SDC1
UniProt ID	SDC1_HUMAN

ADDITIONAL INFORMATION

Note **FOR SCIENTIFIC EDUCATIONAL RESEARCH USE ONLY (RUO). MUST NOT BE USED IN DIAGNOSTIC OR OTHER MEDICAL APPLICATIONS.**



Human myeloma cell line U266 were stained with Anti-CD138 antibody (STJA0000939) (filled gray histogram). Unstained Human myeloma cell line U266 (empty black histogram) were used as control.