

## Anti-TCR Gamma/Delta antibody [B1] {FITC} (STJA0000908)

### GENERAL INFORMATION

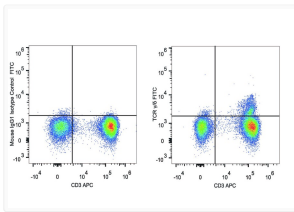
Product Type	Primary antibodies
Applications	FC
Host / Source	Mouse
Reactivity	Human

### PRODUCT PROPERTIES

Clonality	Monoclonal
Concentration	5 Mu L/Test
Conjugation	FITC
Formulation	Phosphate buffered solution, pH 7.2, containing 0.09% stabilizer and 1% protein protectant.
Isotype	IgG1k
Storage Instruction	Store between 2-8°C and protecting from prolonged exposure to light. Do not freeze this product.

### ADDITIONAL INFORMATION

Note **FOR SCIENTIFIC EDUCATIONAL RESEARCH USE ONLY (RUO). MUST NOT BE USED IN DIAGNOSTIC OR OTHER MEDICAL APPLICATIONS.**



Human peripheral blood lymphocytes were stained with Anti-Human CD3 Monoclonal Antibody (APC Conjugated) and Anti-TCR  $\gamma/\delta$  antibody (STJA0000908) (Left). Lymphocytes stained with Anti-Human CD4 Monoclonal Antibody (APC Conjugated) and Mouse IgG1 Isotype Control PE/Cy7 (Right) were used as control.