

## Anti-Ly-6G/Ly-6C antibody [RB6-8C5] {APC} (STJA0000729)

### GENERAL INFORMATION

|               |                    |
|---------------|--------------------|
| Product Type  | Primary antibodies |
| Applications  | FC                 |
| Host / Source | Rat                |
| Reactivity    | Mouse              |

### PRODUCT PROPERTIES

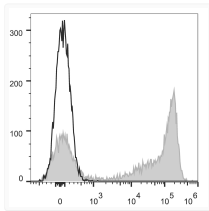
|                     |                                                                                                  |
|---------------------|--------------------------------------------------------------------------------------------------|
| Clonality           | Monoclonal                                                                                       |
| Concentration       | 0.2 mg/mL                                                                                        |
| Conjugation         | APC                                                                                              |
| Formulation         | Phosphate buffered solution, pH 7.2, containing 0.09% stabilizer and 1% protein protectant.      |
| Isotype             | IgG2bk                                                                                           |
| Storage Instruction | Store between 2-8°C and protecting from prolonged exposure to light. Do not freeze this product. |

### TARGET INFORMATION

|             |                                                                                                                                             |
|-------------|---------------------------------------------------------------------------------------------------------------------------------------------|
| Gene ID     | <a href="#">546644</a><br><a href="#">17067</a><br><a href="#">100041546</a>                                                                |
| Gene Symbol | <a href="#">Ly6g</a><br><a href="#">Ly6c1</a><br><a href="#">LY6G_MOUSE</a><br><a href="#">LY6C1_MOUSE</a><br><a href="#">LY6C2_MOUSE</a> < |

### ADDITIONAL INFORMATION

Note FOR SCIENTIFIC EDUCATIONAL RESEARCH USE ONLY (RUO). MUST NOT BE USED IN DIAGNOSTIC OR OTHER MEDICAL APPLICATIONS.



C57BL/6 murine bone marrow cells were stained with Anti-Mouse Gr-1 Monoclonal Antibody (APC Conjugated)[Used at 0.02  $\mu$ g/ $10^6$  cells dilution] (filled gray histogram). Unstained bone marrow cells (empty black histogram) were used as control.