

## Anti-Ly-6G/Ly-6C antibody [RB6-8C5] {FITC} (STJA0000727)

### GENERAL INFORMATION

Product Type	Primary antibodies
Applications	FC
Host / Source	Rat
Reactivity	Mouse

### PRODUCT PROPERTIES

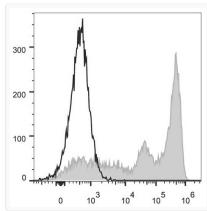
Clonality	Monoclonal
Concentration	0.5 mg/mL
Conjugation	FITC
Formulation	Phosphate buffered solution, pH 7.2, containing 0.09% stabilizer and 1% protein protectant.
Isotype	IgG2bk
Storage Instruction	Store between 2-8°C and protecting from prolonged exposure to light. Do not freeze this product.

### TARGET INFORMATION

Gene ID	<a href="#">100041546</a> <a href="#">546644</a> <a href="#">17067</a>
Gene Symbol	<a href="#">Ly6c2</a> <a href="#">Ly6g</a> <a href="#">LY6C2_MOUSE</a> <a href="#">LY6G_MOUSE</a> <a href="#">LY6C1_MOUSE</a> <

### ADDITIONAL INFORMATION

Note FOR SCIENTIFIC EDUCATIONAL RESEARCH USE ONLY (RUO). MUST NOT BE USED IN DIAGNOSTIC OR OTHER MEDICAL APPLICATIONS.



C57BL/6 murine bone marrow cells were stained with Anti-Mouse Gr-1 Monoclonal Antibody (FITC Conjugated)[Used at 0.2  $\mu$ g/ $10^6$  cells dilution] (filled gray histogram). Unstained bone marrow cells (empty black histogram) were used as control.