

Anti-CD10/MME antibody [CB-CALLA] {PE/Cyanine7} (STJA0000408)

GENERAL INFORMATION

Product Type	Primary antibodies
Applications	FC
Host / Source	Mouse
Reactivity	Human

PRODUCT PROPERTIES

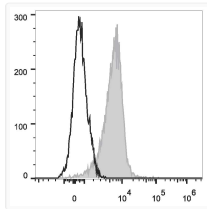
Clonality	Monoclonal
Concentration	5 Mu L/Test
Conjugation	PE/Cyanine7
Formulation	Phosphate buffered solution, pH 7.2, containing 0.09% stabilizer and 1% protein protectant.
Isotype	IgG1k
Storage Instruction	Store between 2-8°C and protecting from prolonged exposure to light. Do not freeze this product.

TARGET INFORMATION

Gene ID	4311
Gene Symbol	MME
UniProt ID	NEP_HUMAN

ADDITIONAL INFORMATION

Note **FOR SCIENTIFIC EDUCATIONAL RESEARCH USE ONLY (RUO). MUST NOT BE USED IN DIAGNOSTIC OR OTHER MEDICAL APPLICATIONS.**



Human peripheral blood granulocytes were stained with Anti-CD10 antibody (STJA0000408) (filled gray histogram). Unstained granulocytes (empty black histogram) were used as control.