

Anti-Klrb1c antibody [PK136] {FITC} (STJA0000035)

GENERAL INFORMATION

Product Type	Primary antibodies
Applications	FC
Host / Source	Mouse
Reactivity	Mouse

PRODUCT PROPERTIES

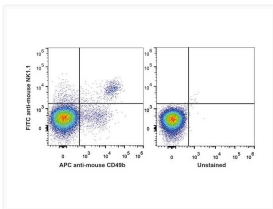
Clonality	Monoclonal
Concentration	0.5 mg/mL
Conjugation	FITC
Formulation	Phosphate buffered solution, pH 7.2, containing 0.09% stabilizer and 1% protein protectant.
Isotype	IgG2ak
Storage Instruction	Store between 2-8°C and protecting from prolonged exposure to light. Do not freeze this product.

TARGET INFORMATION

Gene ID	17059
Gene Symbol	Klrb1c
UniProt ID	KLRBC_MOUSE

ADDITIONAL INFORMATION

Note FOR SCIENTIFIC EDUCATIONAL RESEARCH USE ONLY (RUO). MUST NOT BE USED IN DIAGNOSTIC OR OTHER MEDICAL APPLICATIONS.



C57BL/6 murine splenocytes were stained with Anti-CD161/NK1.1 antibody (STJA0000035) [Used at 0.2 μ g/ 10^6 cells dilution] and Anti-Mouse CD49b Monoclonal Antibody (APC Conjugated). Unstained splenocytes were used as control (Right).