

Goat Anti-Rabbit IgG Heavy & Light Chain antibody {Unconjugated} (STJ99672)

GENERAL INFORMATION

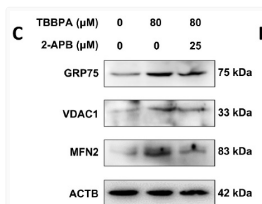
Product Type	Secondary antibodies
Applications	WB/IHC/IF/ELISA
Host / Source	Goat
Reactivity	Rabbit

PRODUCT PROPERTIES

Clonality	Polyclonal
Concentration	4 mg/mL
Conjugation	Unconjugated
Purification	The antibody was affinity-purified from goat antiserum by affinity-chromatography using epitope-specific immunogen.
Dilution Range	WB 1:1000-10000 ELISA 1:10000-20000 IHC 1:50-100 IF 1:50-1000
Formulation	Liquid in PBS containing 0.5% BSA and 0.02% Sodium Azide.
Isotype	IgG
Storage Instruction	Store at -20°C for up to 1 year from the date of receipt, and avoid repeat freeze-thaw cycles.

ADDITIONAL INFORMATION

Note STRICTLY FOR FURTHER SCIENTIFIC RESEARCH USE ONLY (RUO). MUST NOT TO BE USED IN DIAGNOSTIC OR THERAPEUTIC APPLICATIONS.



Polysaccharides from *Tetrastigma Hemsleyanum*
Diels et Gilg ameliorated inflammatory bowel disease by rebuilding the intestinal mucosal barrier and inhibiting inflammation through the SCFA-GPR41/43 signaling pathway. INTERNATIONAL JOURNAL OF BIOLOGICAL MACROMOLECULES Fangmei Zhou