

Goat Anti-Rabbit IgG Heavy & Light Chain antibody {FITC} (STJ99668)

GENERAL INFORMATION

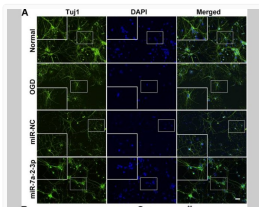
Product Type	Secondary antibodies
Applications	WB/IHC/IF/ELISA
Host / Source	Goat
Reactivity	Rabbit

PRODUCT PROPERTIES

Clonality	Polyclonal
Concentration	4 mg/mL
Conjugation	FITC
Purification	The antibody was affinity-purified from goat antiserum by affinity-chromatography using epitope-specific immunogen.
Dilution Range	IF 1:250-1:2000 FCM 1:250-1:2000
Formulation	Liquid in PBS containing 50% Glycerol, 0.5% BSA and 0.02% Sodium Azide.
Isotype	IgG
Storage Instruction	Store at -20°C for up to 1 year from the date of receipt, and avoid repeat freeze-thaw cycles.

ADDITIONAL INFORMATION

Note **STRICTLY FOR FURTHER SCIENTIFIC RESEARCH USE ONLY (RUO). MUST NOT TO BE USED IN DIAGNOSTIC OR THERAPEUTIC APPLICATIONS.**



Zhang, Zi-Bin, et al. "miRNA-7a-2-3p Inhibits Neuronal Apoptosis in Oxygen-Glucose Deprivation (OGD) Model." *Frontiers in neuroscience* 13 (2019).