

## Anti-FABP1 antibody [2D6-F6] (STJ99298)

### GENERAL INFORMATION

Product Type	Primary antibodies
Applications	ELISA
Host / Source	Mouse
Reactivity	Human

### PRODUCT PROPERTIES

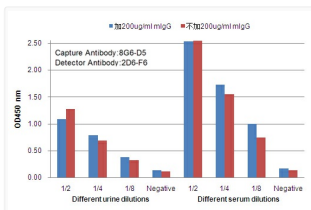
Clonality	Monoclonal
Concentration	1 mg/mL
Conjugation	Unconjugated
Purification	The antibody was affinity-purified from mouse ascites by affinity-chromatography using epitope-specific immunogen.
Dilution Range	ELISA 1:10000-20000
Formulation	Liquid in PBS containing 50% Glycerol, 0.5% BSA and 0.02% Sodium Azide.
Isotype	IgG1
Molecular Weight	Observed: 14kD
Storage Instruction	Store at -20°C for up to 1 year from the date of receipt, and avoid repeat freeze-thaw cycles.

### TARGET INFORMATION

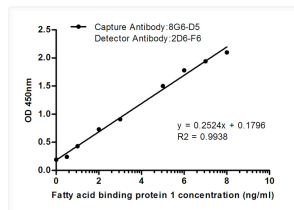
Gene ID	<a href="#">2168</a>
Gene Symbol	<a href="#">FABP1</a>
UniProt ID	<a href="#">FABPL_HUMAN</a>

### ADDITIONAL INFORMATION

Note **STRICTLY FOR FURTHER SCIENTIFIC RESEARCH USE ONLY (RUO). MUST NOT TO BE USED IN DIAGNOSTIC OR THERAPEUTIC APPLICATIONS.**



Observed L-FABP levels in several Human urine samples and Human serum samples at different dilution.



Standard Curve for L-FABP: Capture Antibody Mouse mAb (8G6-D5) to L-FABP and Detector Antibody Mouse mAb (2D6-F6) to L-FABP.