

## Anti-GOT2 antibody (Recombinant protein corresponding to fragment (aa/225-430) GOT2.) (STJ99292)

### GENERAL INFORMATION

Product Type	Primary antibodies
Applications	WB
Host / Source	Mouse
Reactivity	Human/Mouse

### PRODUCT PROPERTIES

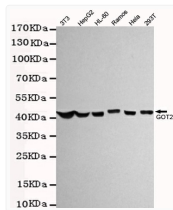
Clonality	Monoclonal
Concentration	1 mg/mL
Conjugation	Unconjugated
Purification	The antibody was affinity-purified from mouse ascites by affinity-chromatography using epitope-specific immunogen.
Dilution Range	WB 1:500-2000
Formulation	Liquid in PBS containing 50% Glycerol, 0.5% BSA and 0.02% Sodium Azide.
Isotype	IgG2b
Molecular Weight	Observed: 47kD
Storage Instruction	Store at -20°C for up to 1 year from the date of receipt, and avoid repeat freeze-thaw cycles.

### TARGET INFORMATION

Gene ID	<a href="#">2806</a>
Gene Symbol	<a href="#">GOT2</a>
UniProt ID	<a href="#">AATM_HUMAN</a>
Immunogen Region	Recombinant protein corresponding to fragment (aa/225-430) GOT2.
Specificity	This antibody detects endogenous levels of GOT2.

### ADDITIONAL INFORMATION

Note STRICTLY FOR FURTHER SCIENTIFIC RESEARCH USE ONLY (RUO). MUST NOT TO BE USED IN DIAGNOSTIC OR THERAPEUTIC APPLICATIONS.



Western blot detection of GOT2 in 3T3, HepG2, HL-60, Ramos, HeLa and 293T cell lysates using GOT2 antibody (1:1000 diluted). Predicted band size: 47kDa. Observed band size: 47kDa.