

Anti-MAP2K6 antibody [8A11-G11-G11] (STJ99282)

GENERAL INFORMATION

Product Type	Primary antibodies
Applications	WB/IP
Host / Source	Mouse
Reactivity	Human/Rat

PRODUCT PROPERTIES

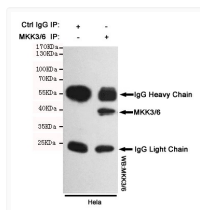
Clonality	Monoclonal
Concentration	1 mg/mL
Conjugation	Unconjugated
Purification	The antibody was affinity-purified from mouse ascites by affinity-chromatography using epitope-specific immunogen.
Dilution Range	WB 1:1000
Formulation	Liquid in PBS containing 50% Glycerol, 0.5% BSA and 0.02% Sodium Azide.
Isotype	IgG1
Molecular Weight	Observed: 40kD
Storage Instruction	Store at -20°C for up to 1 year from the date of receipt, and avoid repeat freeze-thaw cycles.

TARGET INFORMATION

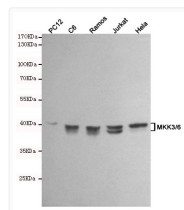
Gene ID	5608
Gene Symbol	MAP2K6
UniProt ID	MP2K6_HUMAN
Specificity	This antibody detects endogenous levels of MKK3 and MKK6 and does not cross-react with related proteins.

ADDITIONAL INFORMATION

Note STRICTLY FOR FURTHER SCIENTIFIC RESEARCH USE ONLY (RUO). MUST NOT TO BE USED IN DIAGNOSTIC OR THERAPEUTIC APPLICATIONS.



Immunoprecipitation analysis of HeLa cell lysates using MKK3/6 mouse mAb.



Western blot analysis of extracts from PC12, C6, Ramos, Jurkat and HeLa cell lysates using MKK3/6 mouse mAb (1:1000 diluted). Predicted band size: 40kDa. Observed band size: 40kDa.