

Anti-EIF2S1 antibody [2E4-F5-E7] (STJ99266)

GENERAL INFORMATION

Product Type	Primary antibodies
Applications	WB/IF/IP
Host / Source	Mouse
Reactivity	Human/Mouse/Rat

PRODUCT PROPERTIES

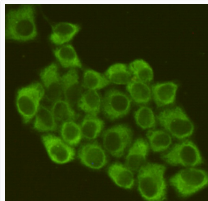
Clonality	Monoclonal
Concentration	1 mg/mL
Conjugation	Unconjugated
Purification	The antibody was affinity-purified from mouse ascites by affinity-chromatography using epitope-specific immunogen.
Dilution Range	WB 1:1000 ICC 1:200 IF 1:50-200
Formulation	Liquid in PBS containing 50% Glycerol, 0.5% BSA and 0.02% Sodium Azide.
Isotype	IgG2b
Molecular Weight	Observed: 38kD
Storage Instruction	Store at -20°C for up to 1 year from the date of receipt, and avoid repeat freeze-thaw cycles.

TARGET INFORMATION

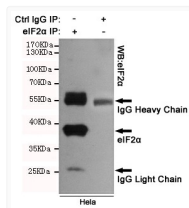
Gene ID	1965
Gene Symbol	EIF2S1
UniProt ID	IF2A_HUMAN
Specificity	This antibody detects endogenous levels of eIF2 Alpha and does not cross-react with related proteins.

ADDITIONAL INFORMATION

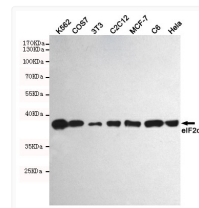
Note STRICTLY FOR FURTHER SCIENTIFIC RESEARCH USE ONLY (RUO). MUST NOT TO BE USED IN DIAGNOSTIC OR THERAPEUTIC APPLICATIONS.



Immunofluorescent analysis of HeLa cells fixed by anhydrous methanol for 2 h at -20°C and using anti-eIF2 Alpha mouse mAb (dilution 1:200).



Immunoprecipitation analysis of HeLa cell lysates using eIF2 Alpha.



Western blot detection of eIF2 Alpha in K562, COS7, 3T3, C2C12, MCF-7, C6 and HeLa cell lysates using eIF2 Alpha mouse mAb (1:1000 diluted). Predicted band size: 38KDa. Observed band size: 38KDa.