

## Anti-RPA2 antibody [3E7-B5-F2] (STJ99210)

### GENERAL INFORMATION

Product Type	Primary antibodies
Applications	WB/IP/ICC
Host / Source	Mouse
Reactivity	Human

### PRODUCT PROPERTIES

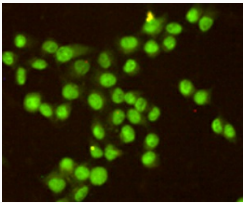
Clonality	Monoclonal
Concentration	1 mg/mL
Conjugation	Unconjugated
Purification	The antibody was affinity-purified from mouse ascites by affinity-chromatography using epitope-specific immunogen.
Dilution Range	WB 1:2000 ICC 1:200
Formulation	Liquid in PBS containing 50% Glycerol, 0.5% BSA and 0.02% Sodium Azide.
Isotype	IgG2b
Molecular Weight	Observed: 32kD
Storage Instruction	Store at -20°C for up to 1 year from the date of receipt, and avoid repeat freeze-thaw cycles.

### TARGET INFORMATION

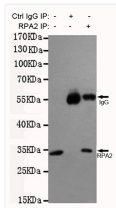
Gene ID	<a href="#">6118</a>
Gene Symbol	<a href="#">RPA2</a>
UniProt ID	<a href="#">RFA2_HUMAN</a>
Specificity	This antibody detects endogenous levels of RPA32/RPA2 and does not cross-react with related proteins.

### ADDITIONAL INFORMATION

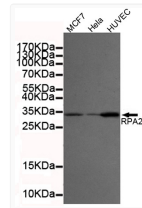
Note **STRICTLY FOR FURTHER SCIENTIFIC RESEARCH USE ONLY (RUO). MUST NOT TO BE USED IN DIAGNOSTIC OR THERAPEUTIC APPLICATIONS.**



Immunocytochemistry staining of HeLa cells fixed with -20°C Methanol and using anti-RPA32/RPA2 antibody (dilution 1:200).



Immunoprecipitation analysis of HeLa cell lysates using RPA32/RPA2 mouse mAb.



Western blot detection of RPA32/RPA2 in MCF7, HeLa and HUVEC cell lysates using RPA32/RPA2 mouse mAb (1:2000 diluted). Predicted band size: 32kDa. Observed band size: 32kDa. Exposure time: 20s.