

Anti-CBR1 antibody [2C9-B12-C4] (STJ99164)

GENERAL INFORMATION

Product Type	Primary antibodies
Applications	WB/ICC
Host / Source	Mouse
Reactivity	Human

PRODUCT PROPERTIES

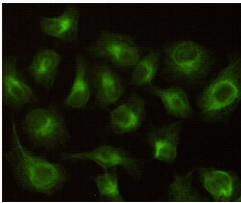
Clonality	Monoclonal
Concentration	1 mg/mL
Conjugation	Unconjugated
Purification	The antibody was affinity-purified from mouse ascites by affinity-chromatography using epitope-specific immunogen.
Dilution Range	WB 1:1000 ICC 1:100
Formulation	Liquid in PBS containing 50% Glycerol, 0.5% BSA and 0.02% Sodium Azide.
Isotype	IgG1
Molecular Weight	Observed: 30kD
Storage Instruction	Store at -20°C for up to 1 year from the date of receipt, and avoid repeat freeze-thaw cycles.

TARGET INFORMATION

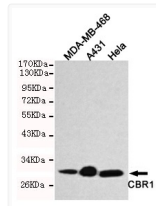
Gene ID	873
Gene Symbol	CBR1
UniProt ID	CBR1_HUMAN
Specificity	This antibody detects endogenous levels of CBR1 and does not cross-react with related proteins.

ADDITIONAL INFORMATION

Note STRICTLY FOR FURTHER SCIENTIFIC RESEARCH USE ONLY (RUO). MUST NOT TO BE USED IN DIAGNOSTIC OR THERAPEUTIC APPLICATIONS.



Immunocytochemistry stain of HeLa using CBR1 mouse mAb (1:100).



Western blot detection of CBR1 in HeLa, A431 and MDA-MB-468 cell lysates using CBR1 mouse mAb (1:1000 diluted). Predicted band size: 30kDa, Observed band size: 30kDa.