

Anti-LRRFIP1 antibody [4F3-D8-C9] (STJ99142)

GENERAL INFORMATION

Product Type	Primary antibodies
Applications	WB
Host / Source	Mouse
Reactivity	Human/Mouse

PRODUCT PROPERTIES

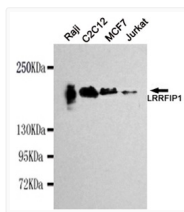
Clonality	Monoclonal
Concentration	1 mg/mL
Conjugation	Unconjugated
Purification	The antibody was affinity-purified from mouse ascites by affinity-chromatography using epitope-specific immunogen.
Dilution Range	WB 1:1000
Formulation	Liquid in PBS containing 50% Glycerol, 0.5% BSA and 0.02% Sodium Azide.
Isotype	IgG1
Molecular Weight	Observed: 160kD
Storage Instruction	Store at -20°C for up to 1 year from the date of receipt, and avoid repeat freeze-thaw cycles.

TARGET INFORMATION

Gene ID	9208
Gene Symbol	LRRFIP1
UniProt ID	LRRF1_HUMAN
Specificity	This antibody detects endogenous levels of LRRFIP1 and does not cross-react with related proteins.

ADDITIONAL INFORMATION

Note STRICTLY FOR FURTHER SCIENTIFIC RESEARCH USE ONLY (RUO). MUST NOT TO BE USED IN DIAGNOSTIC OR THERAPEUTIC APPLICATIONS.



Western blot detection of LRRFIP1 in Raji, C2C12, MCF7 and Jurkat cell lysates using LRRFIP1 mouse mAb (1:1000 diluted). Predicted band size: 89kDa. Observed band size: 160kDa.