

Anti-PPP1CC antibody [2F2-A3-H10] (STJ99089)

GENERAL INFORMATION

Product Type	Primary antibodies
Applications	WB
Host / Source	Mouse
Reactivity	Human

PRODUCT PROPERTIES

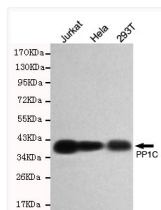
Clonality	Monoclonal
Concentration	1 mg/mL
Conjugation	Unconjugated
Purification	The antibody was affinity-purified from mouse ascites by affinity-chromatography using epitope-specific immunogen.
Dilution Range	WB 1:500
Formulation	Liquid in PBS containing 50% Glycerol, 0.5% BSA and 0.02% Sodium Azide.
Isotype	IgG2b
Molecular Weight	Observed: 38kD
Storage Instruction	Store at -20°C for up to 1 year from the date of receipt, and avoid repeat freeze-thaw cycles.

TARGET INFORMATION

Gene ID	5501
Gene Symbol	PPP1CC
UniProt ID	PP1G_HUMAN
Specificity	This antibody detects endogenous levels of PP1C and does not cross-react with related proteins.

ADDITIONAL INFORMATION

Note **STRICTLY FOR FURTHER SCIENTIFIC RESEARCH USE ONLY (RUO). MUST NOT TO BE USED IN DIAGNOSTIC OR THERAPEUTIC APPLICATIONS.**



Western blot detection of PPP1C in HeLa, 293T and Jurkat cell lysates using PPP1C mouse mAb (1:500 diluted). Predicted band size: 38kDa. Observed band size: 38kDa.