

Anti-CHD3 antibody (C-Term) [7F6-G2-E5] (STJ99071)

GENERAL INFORMATION

Product Type	Primary antibodies
Applications	WB/ICC/IP
Host / Source	Mouse
Reactivity	Human/Mouse/Rat

PRODUCT PROPERTIES

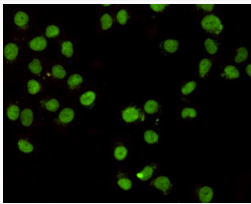
Clonality	Monoclonal
Concentration	1 mg/mL
Conjugation	Unconjugated
Purification	The antibody was affinity-purified from mouse ascites by affinity-chromatography using epitope-specific immunogen.
Dilution Range	WB 1:1000 ICC 1:400
Formulation	Liquid in PBS containing 50% Glycerol, 0.5% BSA and 0.02% Sodium Azide.
Isotype	IgG1
Molecular Weight	Observed: 260kD
Storage Instruction	Store at -20°C for up to 1 year from the date of receipt, and avoid repeat freeze-thaw cycles.

TARGET INFORMATION

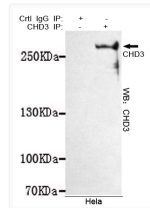
Gene ID	1107
Gene Symbol	CHD3
UniProt ID	CHD3_HUMAN
Immunogen Region	C-Term
Specificity	This antibody detects endogenous levels of CHD3 (C-terminus) and does not cross-react with related proteins.

ADDITIONAL INFORMATION

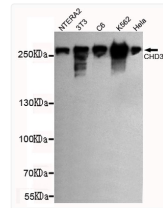
Note STRICTLY FOR FURTHER SCIENTIFIC RESEARCH USE ONLY (RUO). MUST NOT TO BE USED IN DIAGNOSTIC OR THERAPEUTIC APPLICATIONS.



Immunocytochemistry staining of HeLa cells fixed with -20°C Methanol and using CHD3 (C-terminus) mouse mAb (dilution 1:400).



Immunoprecipitation analysis of HeLa cell lysates using CHD3 mouse mAb.



Western blot detection of CHD3 (C-terminus) in NTERA2, 3T3, C6, K562 and HeLa cell lysates using CHD3 (C-terminus) mouse mAb (1:1000 diluted). Predicted band size: 260 kDa. Observed band size: 260 kDa.