

Anti-SMC1A antibody (C-Term) [4C5-C8-A11] (STJ99054)

GENERAL INFORMATION

Product Type	Primary antibodies
Applications	WB/ICC
Host / Source	Mouse
Reactivity	Human

PRODUCT PROPERTIES

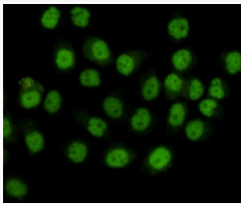
Clonality	Monoclonal
Concentration	1 mg/mL
Conjugation	Unconjugated
Purification	The antibody was affinity-purified from mouse ascites by affinity-chromatography using epitope-specific immunogen.
Dilution Range	WB 1:1000 ICC 1:100
Formulation	Liquid in PBS containing 50% Glycerol, 0.5% BSA and 0.02% Sodium Azide.
Isotype	IgG1
Molecular Weight	Observed: 143kD
Storage Instruction	Store at -20°C for up to 1 year from the date of receipt, and avoid repeat freeze-thaw cycles.

TARGET INFORMATION

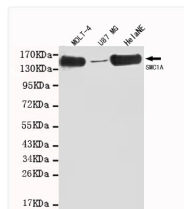
Gene ID	8243
Gene Symbol	SMC1A
UniProt ID	SMC1A_HUMAN
Immunogen Region	C-Term
Specificity	This antibody detects endogenous levels of SMC1A (C-term.) and does not cross-react with related proteins.

ADDITIONAL INFORMATION

Note **STRICTLY FOR FURTHER SCIENTIFIC RESEARCH USE ONLY (RUO). MUST NOT TO BE USED IN DIAGNOSTIC OR THERAPEUTIC APPLICATIONS.**



Immunocytochemistry staining of HeLa cells fixed with 4% Paraformaldehyde and using anti-SMC1A mouse mAb (dilution 1:100).



Western blot detection of SMC1A (C-term) in MOLT-4, U87 MG and HeLaNE cell lysates using SMC1A (N-terminus) mouse mAb (1:1000 diluted). Predicted band size: 143kDa. Observed band size: 143kDa.