

Anti-CBX3 antibody [5G10-F7-A12] (STJ99038)

GENERAL INFORMATION

Product Type	Primary antibodies
Applications	WB/IF/IP/IHC
Host / Source	Mouse
Reactivity	Mouse/Human/Monkey/Hamster/Rat

PRODUCT PROPERTIES

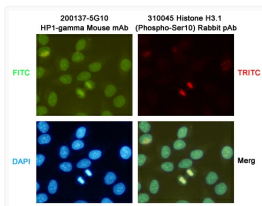
Clonality	Monoclonal
Concentration	1 mg/mL
Conjugation	Unconjugated
Purification	The antibody was affinity-purified from mouse ascites by affinity-chromatography using epitope-specific immunogen.
Dilution Range	WB 1:1000 ICC 1:200 IF 1:50-200
Formulation	Liquid in PBS containing 50% Glycerol, 0.5% BSA and 0.02% Sodium Azide.
Isotype	IgG1
Molecular Weight	Observed: 22kD
Storage Instruction	Store at -20°C for up to 1 year from the date of receipt, and avoid repeat freeze-thaw cycles.

TARGET INFORMATION

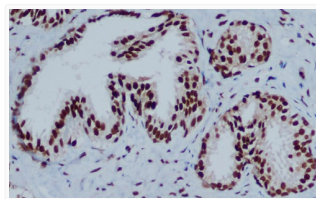
Gene ID	11335
Gene Symbol	CBX3
UniProt ID	CBX3_HUMAN
Specificity	This antibody detects endogenous levels of HP1-gamma and does not cross-react with related proteins.

ADDITIONAL INFORMATION

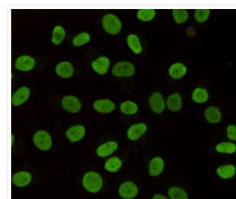
Note **STRICTLY FOR FURTHER SCIENTIFIC RESEARCH USE ONLY (RUO). MUST NOT TO BE USED IN DIAGNOSTIC OR THERAPEUTIC APPLICATIONS.**



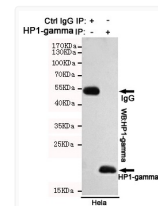
Immunocytochemistry staining of HeLa cells fixed with -20°C Methanol and using HP1-gamma (200137-5G10, dilution 1:200) mouse mAb (green) and Histone H3.1 (Phospho-Ser10) (310045, dilution 1:200) Rabbit pAb (red). DAPI was used to stain nucleus (blue).



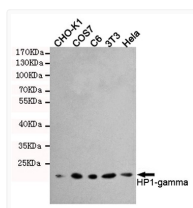
Immunohistochemical analysis of paraffin-embedded Prostate Cancer using HP1-gamma mouse mAb (1/200 dilution). Antigen retrieval was performed by pressure cooking in citrate buffer (pH 6.0).



Immunocytochemistry staining of HeLa cells fixed with 4% Paraformaldehyde and using anti-HP1-gamma mouse mAb (dilution 1:200).



Immunoprecipitation analysis of HeLa cell lysates using HP1-gamma mouse mAb.



Western blot detection of HP1-gamma in HeLa, 3T3, C6, COS7 and CHO-K1 cell lysates using HP1-gamma mouse mAb (1:1000 diluted). Predicted band size: 22KDa. Observed band size: 22KDa.