

## Anti-SMYD2 antibody [1G10-E11-H9] (STJ99036)

### GENERAL INFORMATION

Product Type	Primary antibodies
Applications	WB
Host / Source	Mouse
Reactivity	Human/Mouse

### PRODUCT PROPERTIES

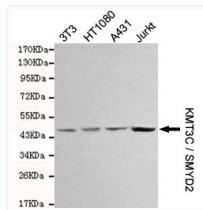
Clonality	Monoclonal
Concentration	1 mg/mL
Conjugation	Unconjugated
Purification	The antibody was affinity-purified from mouse ascites by affinity-chromatography using epitope-specific immunogen.
Dilution Range	WB 1:1000
Formulation	Liquid in PBS containing 50% Glycerol, 0.5% BSA and 0.02% Sodium Azide.
Isotype	IgG2b
Molecular Weight	Observed: 50kD
Storage Instruction	Store at -20°C for up to 1 year from the date of receipt, and avoid repeat freeze-thaw cycles.

### TARGET INFORMATION

Gene ID	<a href="#">56950</a>
Gene Symbol	<a href="#">SMYD2</a>
UniProt ID	<a href="#">SMYD2_HUMAN</a>
Specificity	This antibody detects endogenous levels of KMT3C/SMYD2 and does not cross-react with related proteins.

### ADDITIONAL INFORMATION

Note **STRICTLY FOR FURTHER SCIENTIFIC RESEARCH USE ONLY (RUO). MUST NOT TO BE USED IN DIAGNOSTIC OR THERAPEUTIC APPLICATIONS.**



Western blot detection of KMT3C/SMYD2 in 3T3, HT1080, A431 and Jurkat cell lysates and using KMT3C/SMYD2 mouse mAb (1:1000 diluted). Predicted band size: 50kDa. Observed band size: 50kDa.