

Anti-KDM1A antibody [1E5-H2] (STJ99025)

GENERAL INFORMATION

Product Type	Primary antibodies
Applications	WB/ICC/IP
Host / Source	Mouse
Reactivity	Human/Monkey

PRODUCT PROPERTIES

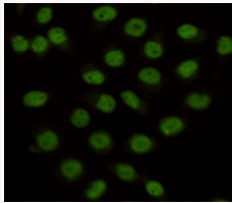
Clonality	Monoclonal
Concentration	1 mg/mL
Conjugation	Unconjugated
Purification	The antibody was affinity-purified from mouse ascites by affinity-chromatography using epitope-specific immunogen.
Dilution Range	WB 1:1000 ICC 1:100
Formulation	Liquid in PBS containing 50% Glycerol, 0.5% BSA and 0.02% Sodium Azide.
Isotype	IgG1
Molecular Weight	Observed: 110kD
Storage Instruction	Store at -20°C for up to 1 year from the date of receipt, and avoid repeat freeze-thaw cycles.

TARGET INFORMATION

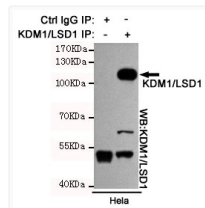
Gene ID	23028
Gene Symbol	KDM1A
UniProt ID	KDM1A_HUMAN
Specificity	This antibody detects endogenous levels of KDM1/LSD1 and does not cross-react with related proteins.

ADDITIONAL INFORMATION

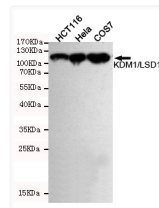
Note **STRICTLY FOR FURTHER SCIENTIFIC RESEARCH USE ONLY (RUO). MUST NOT TO BE USED IN DIAGNOSTIC OR THERAPEUTIC APPLICATIONS.**



Immunocytochemistry staining of HeLa cells fixed with 4% Paraformaldehyde and using anti-KDM1/LSD1 mouse mAb (dilution 1:100).



Immunoprecipitation analysis of HeLa cell lysates using KDM1/LSD1 mouse mAb.



Western blot detection of KDM1/LSD1 in HeLa, HCT116 and COS7 cell lysates using KDM1/LSD1 mouse mAb (1:1000 diluted). Predicted band size: 110kDa. Observed band size: 110kDa.