

Anti-CNPY3 antibody (1-50 aa) (STJ99014)

GENERAL INFORMATION

Product Type	Primary antibodies
Applications	IHC/IF/ELISA
Host / Source	Rabbit
Reactivity	Human/Mouse

PRODUCT PROPERTIES

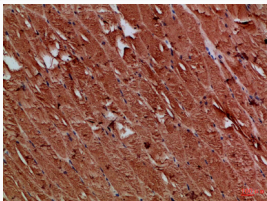
Clonality	Polyclonal
Concentration	1 mg/mL
Conjugation	Unconjugated
Purification	The antibody was affinity-purified from rabbit antiserum by affinity-chromatography using epitope-specific immunogen.
Dilution Range	IHC-P 1:50-200 ELISA 1:10000-20000 IF 1:50-200
Formulation	Liquid in PBS containing 50% Glycerol, 0.5% BSA and 0.02% Sodium Azide.
Isotype	IgG
Storage Instruction	Store at -20°C for up to 1 year from the date of receipt, and avoid repeat freeze-thaw cycles.

TARGET INFORMATION

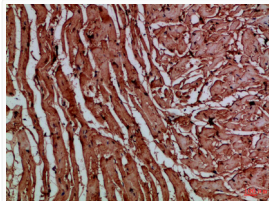
Gene ID	10695
Gene Symbol	CNPY3
UniProt ID	CNPY3_HUMAN
Immunogen Region	1-50 aa
Specificity	The antibody detects endogenous CNPY3

ADDITIONAL INFORMATION

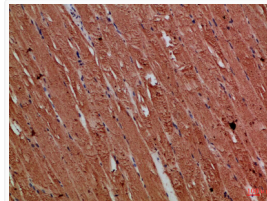
Note STRICTLY FOR FURTHER SCIENTIFIC RESEARCH USE ONLY (RUO). MUST NOT TO BE USED IN DIAGNOSTIC OR THERAPEUTIC APPLICATIONS.



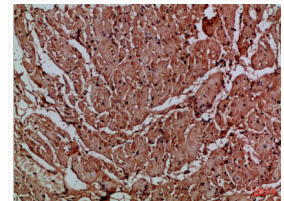
Immunohistochemical analysis of paraffin-embedded Human-skeletal-muscle, antibody was diluted at 1:100



Immunohistochemical analysis of paraffin-embedded Human-heart, antibody was diluted at 1:100



Immunohistochemical analysis of paraffin-embedded Human-skeletal-muscle, antibody was diluted at 1:100



Immunohistochemical analysis of paraffin-embedded Human-heart, antibody was diluted at 1:100