

## Anti-TUBG1 antibody (380-440 aa) (STJ98974)

### GENERAL INFORMATION

Product Type	Primary antibodies
Applications	IHC/IF/ELISA
Host / Source	Rabbit
Reactivity	Human/Mouse/Rat

### PRODUCT PROPERTIES

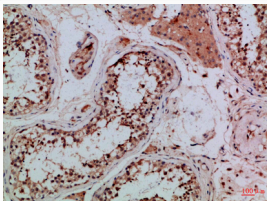
Clonality	Polyclonal
Concentration	1 mg/mL
Conjugation	Unconjugated
Purification	The antibody was affinity-purified from rabbit antiserum by affinity-chromatography using epitope-specific immunogen.
Dilution Range	IHC-P 1:50-200 ELISA 1:10000-20000 IF 1:50-200
Formulation	Liquid in PBS containing 50% Glycerol, 0.5% BSA and 0.02% Sodium Azide.
Isotype	IgG
Storage Instruction	Store at -20°C for up to 1 year from the date of receipt, and avoid repeat freeze-thaw cycles.

### TARGET INFORMATION

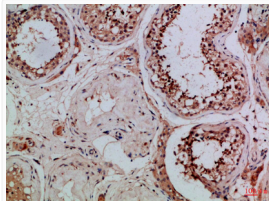
Gene ID	<a href="#">7283</a>
Gene Symbol	<a href="#">TUBG1</a>
UniProt ID	<a href="#">TBG1_HUMAN</a>
Immunogen Region	380-440 aa
Specificity	The antibody detects endogenous Tubulin Gamma

### ADDITIONAL INFORMATION

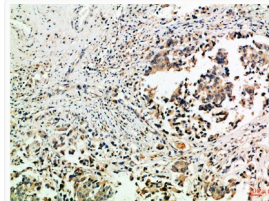
Note STRICTLY FOR FURTHER SCIENTIFIC RESEARCH USE ONLY (RUO). MUST NOT TO BE USED IN DIAGNOSTIC OR THERAPEUTIC APPLICATIONS.



Immunohistochemical analysis of paraffin-embedded Human-testis, antibody was diluted at 1:100



Immunohistochemical analysis of paraffin-embedded Human-testis, antibody was diluted at 1:100



Immunohistochemical analysis of paraffin-embedded Human-breast-cancer, antibody was diluted at 1:100