

Anti-SLC6A1 antibody (170-220 aa) (STJ98949)

GENERAL INFORMATION

Product Type	Primary antibodies
Applications	WB/IHC/IF/ELISA
Host / Source	Rabbit
Reactivity	Human/Mouse/Rat

PRODUCT PROPERTIES

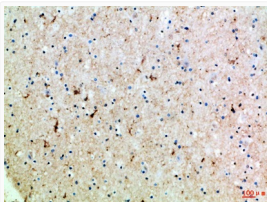
Clonality	Polyclonal
Concentration	1 mg/mL
Conjugation	Unconjugated
Purification	The antibody was affinity-purified from rabbit antiserum by affinity-chromatography using epitope-specific immunogen.
Dilution Range	WB 1:500-2000 IHC-P 1:500-200 ELISA 1:10000-20000 IF 1:50-200
Formulation	Liquid in PBS containing 50% Glycerol, 0.5% BSA and 0.02% Sodium Azide.
Isotype	IgG
Molecular Weight	Observed: 50kD
Storage Instruction	Store at -20°C for up to 1 year from the date of receipt, and avoid repeat freeze-thaw cycles.

TARGET INFORMATION

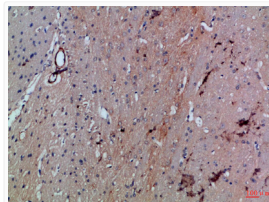
Gene ID	6529
Gene Symbol	SLC6A1
UniProt ID	SC6A1_HUMAN
Immunogen Region	170-220 aa
Specificity	The antibody detects endogenous GABA T-1

ADDITIONAL INFORMATION

Note STRICTLY FOR FURTHER SCIENTIFIC RESEARCH USE ONLY (RUO). MUST NOT TO BE USED IN DIAGNOSTIC OR THERAPEUTIC APPLICATIONS.



Immunohistochemical analysis of paraffin-embedded Human-brain, antibody was diluted at 1:100



Immunohistochemical analysis of paraffin-embedded Rat-brain, antibody was diluted at 1:100



Western blot analysis of HELA/mouse brainCell Lysate using antibody. Secondary antibody was diluted at 1:20000