

## Anti-CCN2 antibody (141-190 aa) (STJ98812)

### GENERAL INFORMATION

Product Type	Primary antibodies
Applications	IHC/IF/ELISA
Host / Source	Rabbit
Reactivity	Human/Mouse/Rat

### PRODUCT PROPERTIES

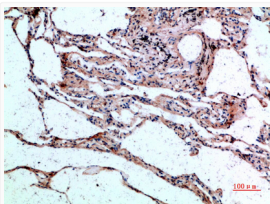
Clonality	Polyclonal
Concentration	1 mg/mL
Conjugation	Unconjugated
Purification	The antibody was affinity-purified from rabbit antiserum by affinity-chromatography using epitope-specific immunogen.
Dilution Range	IHC-P 1:50-200 ELISA 1:10000-20000 IF 1:50-200
Formulation	Liquid in PBS containing 50% Glycerol, 0.5% BSA and 0.02% Sodium Azide.
Isotype	IgG
Storage Instruction	Store at -20°C for up to 1 year from the date of receipt, and avoid repeat freeze-thaw cycles.

### TARGET INFORMATION

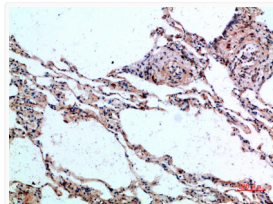
Gene ID	<a href="#">1490</a>
Gene Symbol	<a href="#">CCN2</a>
UniProt ID	<a href="#">CCN2_HUMAN</a>
Immunogen Region	141-190 aa
Specificity	The antibody detects endogenous CTGF

### ADDITIONAL INFORMATION

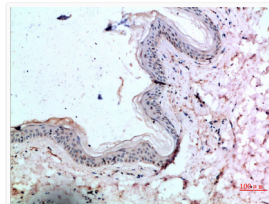
Note STRICTLY FOR FURTHER SCIENTIFIC RESEARCH USE ONLY (RUO). MUST NOT TO BE USED IN DIAGNOSTIC OR THERAPEUTIC APPLICATIONS.



Immunohistochemical analysis of paraffin-embedded human-lung, antibody was diluted at 1:200



Immunohistochemical analysis of paraffin-embedded human-lung, antibody was diluted at 1:200



Immunohistochemical analysis of paraffin-embedded human-skin, antibody was diluted at 1:200