

Anti-CXCL5 antibody (65-114 aa) (STJ98781)

GENERAL INFORMATION

Product Type	Primary antibodies
Applications	IHC/IF/ELISA
Host / Source	Rabbit
Reactivity	Human/Rat/Mouse

PRODUCT PROPERTIES

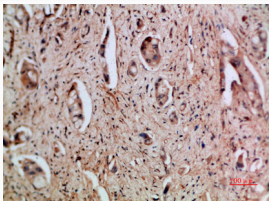
Clonality	Polyclonal
Concentration	1 mg/mL
Conjugation	Unconjugated
Purification	The antibody was affinity-purified from rabbit antiserum by affinity-chromatography using epitope-specific immunogen.
Dilution Range	IHC-P 1:50-200 ELISA 1:10000-20000 IF 1:50-200
Formulation	Liquid in PBS containing 50% Glycerol, 0.5% BSA and 0.02% Sodium Azide.
Isotype	IgG
Storage Instruction	Store at -20°C for up to 1 year from the date of receipt, and avoid repeat freeze-thaw cycles.

TARGET INFORMATION

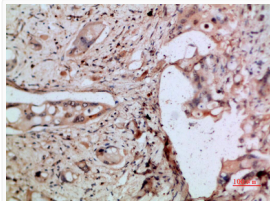
Gene ID	6374
Gene Symbol	CXCL5
UniProt ID	CXCL5_HUMAN
Immunogen Region	65-114 aa
Specificity	The antibody detects endogenous ENA-78

ADDITIONAL INFORMATION

Note **STRICTLY FOR FURTHER SCIENTIFIC RESEARCH USE ONLY (RUO). MUST NOT TO BE USED IN DIAGNOSTIC OR THERAPEUTIC APPLICATIONS.**



Immunohistochemical analysis of paraffin-embedded human-pancreas-cancer, antibody was diluted at 1:200



Immunohistochemical analysis of paraffin-embedded human-pancreas-cancer, antibody was diluted at 1:200