

## Anti-LAMP3 antibody (261-310 aa) (STJ98762)

### GENERAL INFORMATION

Product Type	Primary antibodies
Applications	WB/IHC/IF/ELISA
Host / Source	Rabbit
Reactivity	Human/Rat/Mouse

### PRODUCT PROPERTIES

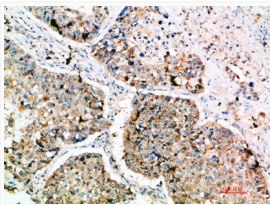
Clonality	Polyclonal
Concentration	1 mg/mL
Conjugation	Unconjugated
Purification	The antibody was affinity-purified from rabbit antiserum by affinity-chromatography using epitope-specific immunogen.
Dilution Range	WB 1:500-2000 IHC-P 1:500-200 ELISA 1:10000-20000 IF 1:50-200
Formulation	Liquid in PBS containing 50% Glycerol, 0.5% BSA and 0.02% Sodium Azide.
Isotype	IgG
Molecular Weight	Observed: 44kD
Storage Instruction	Store at -20°C for up to 1 year from the date of receipt, and avoid repeat freeze-thaw cycles.

### TARGET INFORMATION

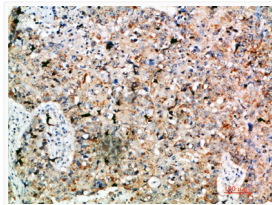
Gene ID	<a href="#">27074</a>
Gene Symbol	<a href="#">LAMP3</a>
UniProt ID	<a href="#">LAMP3_HUMAN</a>
Immunogen Region	261-310 aa
Specificity	The antibody detects endogenous DC-LAMP

### ADDITIONAL INFORMATION

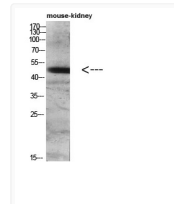
Note STRICTLY FOR FURTHER SCIENTIFIC RESEARCH USE ONLY (RUO). MUST NOT TO BE USED IN DIAGNOSTIC OR THERAPEUTIC APPLICATIONS.



Immunohistochemical analysis of paraffin-embedded human-lung-cancer, antibody was diluted at 1:200



Immunohistochemical analysis of paraffin-embedded human-lung-cancer, antibody was diluted at 1:200



Western blot analysis of mouse-lung mouse-heart 293T HeLa 3T3 lysate, antibody was diluted at 500. Secondary antibody was diluted at 1:20000